

## TECHNICAL FEATURES



| MECATECH AUTOMATIC POLISHING MACHINES                     |               |               |                  |               |               |
|---|---------------|---------------|------------------|---------------|---------------|
|   | 250 SPI       | 250 SPC       | 250 DPC          | 300 SPC       | 300 SPS       |
| Reference   | 67910         | 67920         | 67930            | 67940         | 67950         |
| Number of motors  | 1             | 1             | 2                | 1             | 1             |
| Number of polishing platens                               | 1             | 1             | 2                | 1             | 1             |
| Diameter of the polishing platen                          | 200 to 250 mm | 200 to 250 mm | 200 to 250 mm x2 | 250 to 300 mm | 300 mm        |
| Rotation speed  | 20 to 700 RPM | 20 to 700 RPM | 20 to 700 RPM    | 20 to 700 RPM | 20 to 700 RPM |
| Rotation direction : clockwise and counter-clockwise      | ✓             | ✓             | ✓                | ✓             | ✓             |
| Nominal power S1  | 750 W         | 750 W         | 2 x 750 W        | 900 W         | 900 W         |
| Nominal power S3  | 1100 W        | 1100 W        | 2 x 1100 W       | 1500 W        | 1500 W        |
| Torque compensation                                       | Automatic     | Automatic     | Automatic        | Automatic     | Automatic     |
| Immediate stop of the platen                              | Automatic     | Automatic     | Automatic        | Automatic     | Automatic     |
| Progressive acceleration of the platen                    | Automatic     | Automatic     | Automatic        | Automatic     | Automatic     |
| Drying function   | 600 RPM       | 600 RPM       | 600 RPM          | 600 RPM       | 600 RPM       |
| Spindle on bearing  | ✓             | ✓             | ✓                | ✓             | ✓             |
| Base platen + anti-vibration seals                        | ✓             | ✓             | ✓                | ✓             | ✓             |
| Additional removable bowl                                 | ✓             | ✓             | ✓                | ✓             | ✓             |
| Splash guard  | ✓             | ✓             | ✓                | ✓             | ✓             |
| High strength mechanically welded + painted steel chassis | ✓             | ✓             | ✓                | ✓             | ✓             |
| Body RIM injection  | ✓             | ✓             | ✓                | ✓             | ✓             |
| 16/9 color TFT LCD touch screen 7"                        | ✓             | ✓             | ✓                | ✓             | ✓             |
| Simplified service and maintenance without dismantling    | ✓             | ✓             | ✓                | ✓             | ✓             |
| Power supply  | 230V 1P       | 230V 1P       | 230V 1P          | 230V 1P       | 230V 1P       |
| Frequency   | 50 - 60 Hz    | 50 - 60 Hz    | 50 - 60 Hz       | 50 - 60 Hz    | 50 - 60 Hz    |
| Max. current  | 8 A           | 8 A           | 8 A              | 8 A           | 8 A           |
| Air pressure  | 5-10 bars     | 5-10 bars     | 5-10 bars        | 5-10 bars     | 5-10 bars     |
| Width   | 510 mm        | 510 mm        | 920 mm           | 620 mm        | 620 mm        |
| Depth   | 810 mm        | 810 mm        | 735 mm           | 875 mm        | 875 mm        |
| Height  | 665 mm        | 665 mm        | 665 mm           | 680 mm        | 700 mm        |
| Weight  | 73 kg         | 73 kg         | 98 kg            | 82 kg         | 96 kg         |
| Water inlet   | ø12 mm        | ø12 mm        | ø12 mm           | ø12 mm        | ø12 mm        |
| Water outlet  | ø32 mm        | ø32 mm        | ø32 mm           | ø32 mm        | ø32 mm        |
| Compressed air  | ø10 mm        | ø10 mm        | ø10 mm           | ø10 mm        | ø10 mm        |

## POLISHING HEADS

|  | 250 SPI       | 250 SPC       | 250 DPC       | 300 SPC       | 300 SPS       |
|--|---------------|---------------|---------------|---------------|---------------|
| Individual pressure                                  | ✓             | ✓             | ✓             | ✓             | ✓             |
| Central pressure                                     | -             | ✓             | ✓             | ✓             | ✓             |
| Mounted samples                                      | ✓             | ✓             | ✓             | ✓             | ✓             |
| Non mounted samples                                  | -             | ✓             | ✓             | ✓             | ✓             |
| Rectangular samples                                  | ✓             | ✓             | ✓             | ✓             | ✓             |
| Rotation speed                                       | 20 to 150 RPM | 20 to 150 RPM | 20 to 150 RPM | 20 to 150 RPM | 20 to 150 RPM |
| Rotation direction : clockwise and counter-clockwise | ✓             | ✓             | ✓             | ✓             | ✓             |
| Motor power  | 180 W         | 180 W         | 180 W         | 270 W         | 270 W         |
| Force per specimen                                   | 0,1-5 daN     | 0,1-5 daN     | 0,1-5 daN     | 0,1-5 daN     | 0,1-5 daN     |
| Maximum power available                              | 20 daN        | 30 daN        | 30 daN        | 30 daN        | 40 daN        |
| Material removal measurement with automatic stop     | -             | ✓             | ✓             | ✓             | ✓             |
| Force controlled electronically                      | ✓             | ✓             | ✓             | ✓             | ✓             |
| Force reduced at start and end of cycle              | ✓             | ✓             | ✓             | ✓             | ✓             |
| 50mm lowering and raising of the polishing head      | ✓             | ✓             | ✓             | ✓             | -             |
| Automatic locking of the polishing head              | ✓             | ✓             | ✓             | ✓             | ✓             |
| 200cc (x2) lubricant included in the polishing head  | ✓             | ✓             | ✓             | ✓             | ✓             |
| Sweeping function                                    | -             | -             | -             | -             | ✓             |

## ACCESSORIES (100% COMPATIBLE WITH THE OLDER GENERATION)



**Almagtech platen**  
 ø 200 mm. Ref. 67822  
 ø 250 mm. Ref. 67820  
 ø 300 mm. Ref. 67821



**PVC lid**  
 ø 250 mm. Ref. 66050  
 ø 300 mm. Ref. 66025



**Air compressor**  
 (in case of no compressed air supply)  
 Ref. 67750

## POLISHING HEAD ACCESSORIES

| SPECIMEN HOLDERS FOR CENTRAL PRESSURE POLISHING |   |                                      |         |         |         |         |         |
|---|---|--------------------------------------|---------|---------|---------|---------|---------|
| Ref.  |   |                                      | 250 SPI | 250 SPC | 250 DPC | 300 SPC | 300 SPS |
| 57120   | Specimen holder Ø120 mm                 | for 3 samples Ø25 to 32 mm           | -       | ✓       | ✓       | -       | -       |
| 57126   | Specimen holder Ø140 mm                 | for 6 samples Ø25 to 32 mm           | -       | ✓       | ✓       | -       | -       |
| 57125   | Specimen holder Ø140 mm                 | for 3 samples Ø30 to 40 mm           | -       | ✓       | ✓       | -       | -       |
| 57102   | Specimen holder Ø160 mm                 | for 6 samples Ø25 to 32 mm           | -       | ✓       | ✓       | ✓       | ✓       |
| 57103   | Specimen holder Ø160 mm                 | for 4 samples Ø30 to 40 mm           | -       | ✓       | ✓       | ✓       | ✓       |
| 57104   | Specimen holder Ø160 mm                 | for 4 samples Ø40 to 50 mm           | -       | ✓       | ✓       | ✓       | ✓       |
| 57106   | Specimen holder Ø160 mm annular holding | for 6 samples Ø30 mm                 | -       | ✓       | ✓       | ✓       | ✓       |
| 57107   | Specimen holder Ø160 mm annular holding | for 4 samples Ø40 mm                 | -       | ✓       | ✓       | ✓       | ✓       |
| 57105   | Blank specimen holder                   | Ø160 mm                              | -       | ✓       | ✓       | ✓       | ✓       |
| 57119   | Specimen holder Ø170 mm                 | for 6 samples Ø30 to 40 mm           | -       | ✓       | ✓       | ✓       | ✓       |
| 57108   | Specimen holder Ø210 mm                 | for 12 samples Ø25 to 32 mm          | -       | ✓       | ✓       | ✓       | ✓       |
| 57109   | Specimen holder Ø210 mm                 | for 8 samples Ø30 to 40 mm           | -       | ✓       | ✓       | ✓       | ✓       |
| 57110   | Specimen holder Ø210 mm                 | for 6 samples Ø50 mm                 | -       | -       | -       | ✓       | ✓       |
| 57114   | Specimen holder Ø210 mm                 | for 6 rectangular samples 30 x 55mm  | -       | -       | -       | ✓       | ✓       |
| 57111   | Specimen holder Ø220 mm                 | for 3 rectangular samples 50 x 100mm | -       | -       | -       | ✓       | ✓       |
| 57116   | Compulsory hooking system               | for central pressure specimen holder | -       | ✓       | ✓       | ✓       | ✓       |
| 57162   | Levelling press for samples             |                                      | -       | ✓       | ✓       | ✓       | ✓       |

| SPECIMEN HOLDERS FOR INDIVIDUAL PRESSURE POLISHING |                         |                        |         |         |         |         |         |
|--|-------------------------|------------------------|---------|---------|---------|---------|---------|
| Ref.   |                         |                        | 250 SPI | 250 SPC | 250 DPC | 300 SPC | 300 SPS |
| 57142  | Specimen holder Ø140 mm | for 4 samples Ø30 mm   | ✓       | -       | -       | -       | -       |
| 57141  | Specimen holder Ø150 mm | for 4 samples Ø40 mm   | ✓       | -       | -       | -       | -       |
| 57144  | Specimen holder Ø150 mm | for 4 samples Ø38,1 mm | ✓       | -       | -       | -       | -       |
| 67830  | Specimen holder Ø150 mm | for 6 samples Ø30 mm   | -       | ✓       | ✓       | ✓       | -       |
| 57145  | Specimen holder Ø160 mm | for 6 samples Ø38,1 mm | -       | ✓       | ✓       | ✓       | -       |
| 67833  | Specimen holder Ø160 mm | for 6 samples Ø40 mm   | -       | ✓       | ✓       | ✓       | -       |
| 57143  | Specimen holder Ø170 mm | for 3 samples Ø50 mm   | -       | ✓       | ✓       | -       | -       |
| 67835  | Specimen holder Ø170 mm | for 6 samples Ø50 mm   | -       | -       | -       | ✓       | -       |
| 67838  | Specimen holder Ø180 mm | for 8 samples Ø30 mm   | -       | -       | -       | -       | ✓       |
| 67837  | Specimen holder Ø190 mm | for 8 samples Ø40 mm   | -       | -       | -       | -       | ✓       |
| 67836  | Specimen holder Ø200 mm | for 8 samples Ø50 mm   | -       | -       | -       | -       | ✓       |

| REDUCTION RINGS FOR SPECIMEN HOLDERS |                  |                     |         |         |         |         |         |
|--------------------------------------|------------------|---------------------|---------|---------|---------|---------|---------|
| Ref.                                 |                  |                     | 250 SPI | 250 SPC | 250 DPC | 300 SPC | 300 SPS |
| 67850                                | 1 reduction ring | Ø 50 mm ▶ Ø 25 mm   | -       | ✓       | ✓       | ✓       | ✓       |
| 67851                                | 1 reduction ring | Ø 50 mm ▶ Ø 25,4 mm | -       | ✓       | ✓       | ✓       | ✓       |
| 67852                                | 1 reduction ring | Ø 50 mm ▶ Ø 30 mm   | -       | ✓       | ✓       | ✓       | ✓       |
| 67853                                | 1 reduction ring | Ø 50 mm ▶ Ø 31,7 mm | -       | ✓       | ✓       | ✓       | ✓       |
| 67854                                | 1 reduction ring | Ø 50 mm ▶ Ø 38,1 mm | -       | ✓       | ✓       | ✓       | ✓       |
| 67855                                | 1 reduction ring | Ø 50 mm ▶ Ø 40 mm   | -       | ✓       | ✓       | ✓       | ✓       |
| 67856                                | 1 reduction ring | Ø 40 mm ▶ Ø 25 mm   | ✓       | ✓       | ✓       | ✓       | ✓       |
| 67857                                | 1 reduction ring | Ø 40 mm ▶ Ø 25,4 mm | ✓       | ✓       | ✓       | ✓       | ✓       |
| 67858                                | 1 reduction ring | Ø 40 mm ▶ Ø 30 mm   | ✓       | ✓       | ✓       | ✓       | ✓       |
| 67859                                | 1 reduction ring | Ø 40 mm ▶ Ø 31,7 mm | ✓       | ✓       | ✓       | ✓       | ✓       |



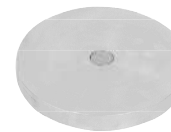
Ref. 57120 - 57125



Ref. 57102 - 57126



Ref. 57103



Ref. 57105



Ref. 57106



Ref. 57107



Ref. 67830 / 33 / 35



Ref. 67836 - 67838



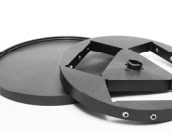
Ref. 57141 / 42 / 44



Ref. 57116

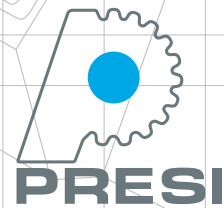


Reduction ring



Specific holders on request

WWW.PRESI.COM



genesis 03/19



**MECATECH**  
 250 SPI | 250 SPC | 250 DPC  
 300 SPC | 300 SPS

POLISHING

MECATECH  
 250 SPI | 250 SPC  
 250 DPC | 300 SPC  
 300 SPS



# MECATECH

THE AUTOMATIC POLISHING MACHINE RANGE BY PRESI

User-friendly, reliable and robust, the new MECATECH range of automatic polishing machines allows both manual and automatic use. The machines are equipped with platens from Ø200 to 300 mm and have a motor power from 750W to 1500W.

-  **POWERFUL**
-  **ROBUST**
-  **RELIABLE**

## Easy maintenance

- Removable over-bowl easy to clean.
- The tank incorporates an anti-splash device that prevents any projection

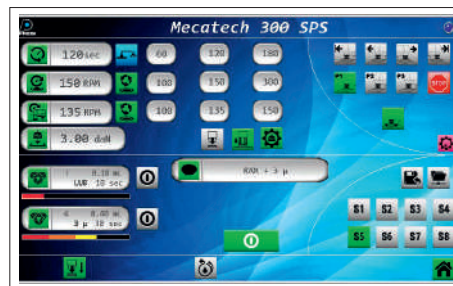


## Large color touchscreen

- 7" TFT LCD color display, 16/9
- Ergonomic and intuitive user interface
- **Many features** : speed and direction of rotation (head and platen), sprinkling, drying, stage duration, applied force, management of Distritech 5.1 and the 2 tanks integrated

## Programming and memorization

- Easy creation and modification of polishing methods
- Perfect reproducibility of methods
- Password protection (4 levels)
- A USB connection makes it possible to save the integrity of the registered polishing methods and ensures the evolution of the material.



## Durability

The body and the composite tank exclude any oxidation. It allows a better shock resistance

## Emergency stop button

Convenient and quick access to immediately stop its operation.

## LED lighting

Removes shadow areas under the polishing head giving the user better visual control during operation.

## Lubrication

2 tanks with peristaltic pump allow the supply of lubricants or abrasives for a precise dosing.

## Polishing head

- Powerful motor gearing driven by a frequency inverter
- Automatic polishing head locking when the cycle starts
- Lateral shifting of the head to completely release the polishing platen and work in manual mode (except for the 300 SPS model)
- Programmable material removal in central pressure

## Optimum polishing quality

A proportional electronic valve enables the air pressure to be measured and stabilised at a precise value. The force applied to the samples is perfectly constant and reproducibility is guaranteed.

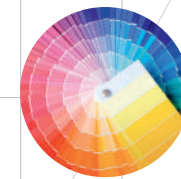
## Motor with frequency inverter

- Constant torque and speed whatever the applied load
- Precise speed variation
- Gives exceptional power to the head and the platen
- Progressive acceleration and immediate stop
- 2 directions of rotation (head and platen)

## IMAGINE YOUR MACHINE TAILOR-MADE

WITH THE COLOR OF YOUR CHOICE !

Opt for a colour of the hood in the RAL color of your choice



## ROBUSTNESS AND CHARACTER

With its affirmed style and edged lines, this new range is distinguished by its design with an easily recognizable sleek and refined carbon look.

## MECATECH RANGE

PLATEN DIAMETERS : 200 to 250 mm



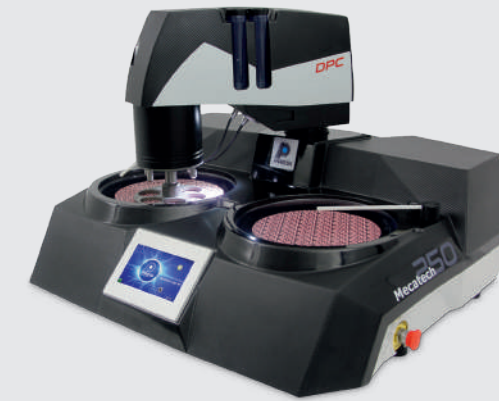
### MECATECH 250 SPI

1 platen | 4 pistons  
Individual pressure



### MECATECH 250 SPC

1 platen | 6 pistons  
Central and individual pressure



### MECATECH 250 DPC

2 platens | 6 pistons  
Central and individual pressure

PLATEN DIAMETERS : 250 to 300 mm



### MECATECH 300 SPC

1 platen | 6 pistons  
Central and individual pressure

### MECATECH 300 SPS

1 platen | 8 pistons  
Central and individual pressure

### SWEEPING FUNCTION

This function optimizes the use of consumables and improves samples flatness.

Productivity is improved by increasing the capacity of the polishing head from 6 to 8 samples.



## OPTIONAL

### MECAPROTECT

This protection hood meets the most stringent safety requirements. It perfectly isolates the machine from the operator. The connection between the machine and the hood prevents the MECATECH from working when the hood is open.

MECAPROTECT 250 | Ref. 67915

MECAPROTECT 300 | Ref. 67945



### DISTRITECH 5.1<sup>\*</sup> | Ref. 67890

**Abrasive suspensions dispenser device.**

- 5 bottles of 500 cc
- Each abrasive suspension dispenser is managed by the machine
- Each bottle has its own distribution circuit (no risk of pollution)
- Colloidal silica distribution with automatic rinsing function (no risk of crystallisation)
- LED illuminated display indicates the bottle in operation



<sup>\*</sup> Compatible with the entire MECATECH range