



HZ50-4
Hardness tester by Presi



FULLY AUTOMATIC HARDNESS TESTER:
OPTICAL QUALITY, RELIABILITY AND PRECISION

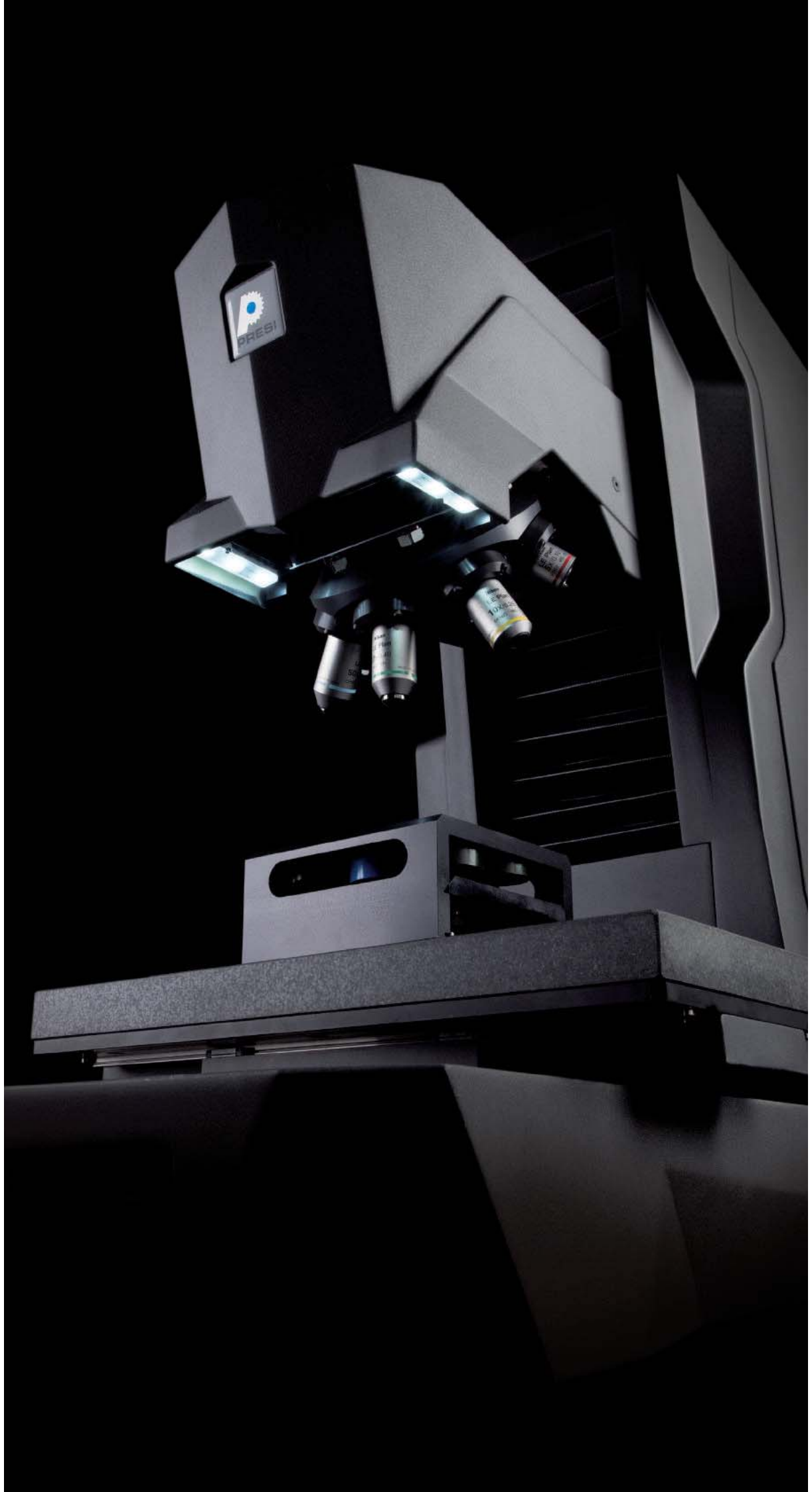


HZ50-4

Hardness tester by Presi

The HZ50-4 hardness tester
is instantly recognizable.
100% made in France,
its original design
along with its robustness
and highly technical
capacities make it
an essential work tool.





HZ50-4

Hardness tester by Presi

Fully automatic hardness tester.

7 position turret, equipped
with 4 lenses, 2 indenters,
and 1 touch probe.

High rigidity of the chassis
for a perfect load application.

Large work space with
a major vertical extension.

2 LED lighting system
for micro and macroscopy use.

HZ50-4

Hardness tester by Presi

2 load cells
10g to 50kg loads.

2 cameras for macroscopic
colored view, and microscopic
black & white analysis.



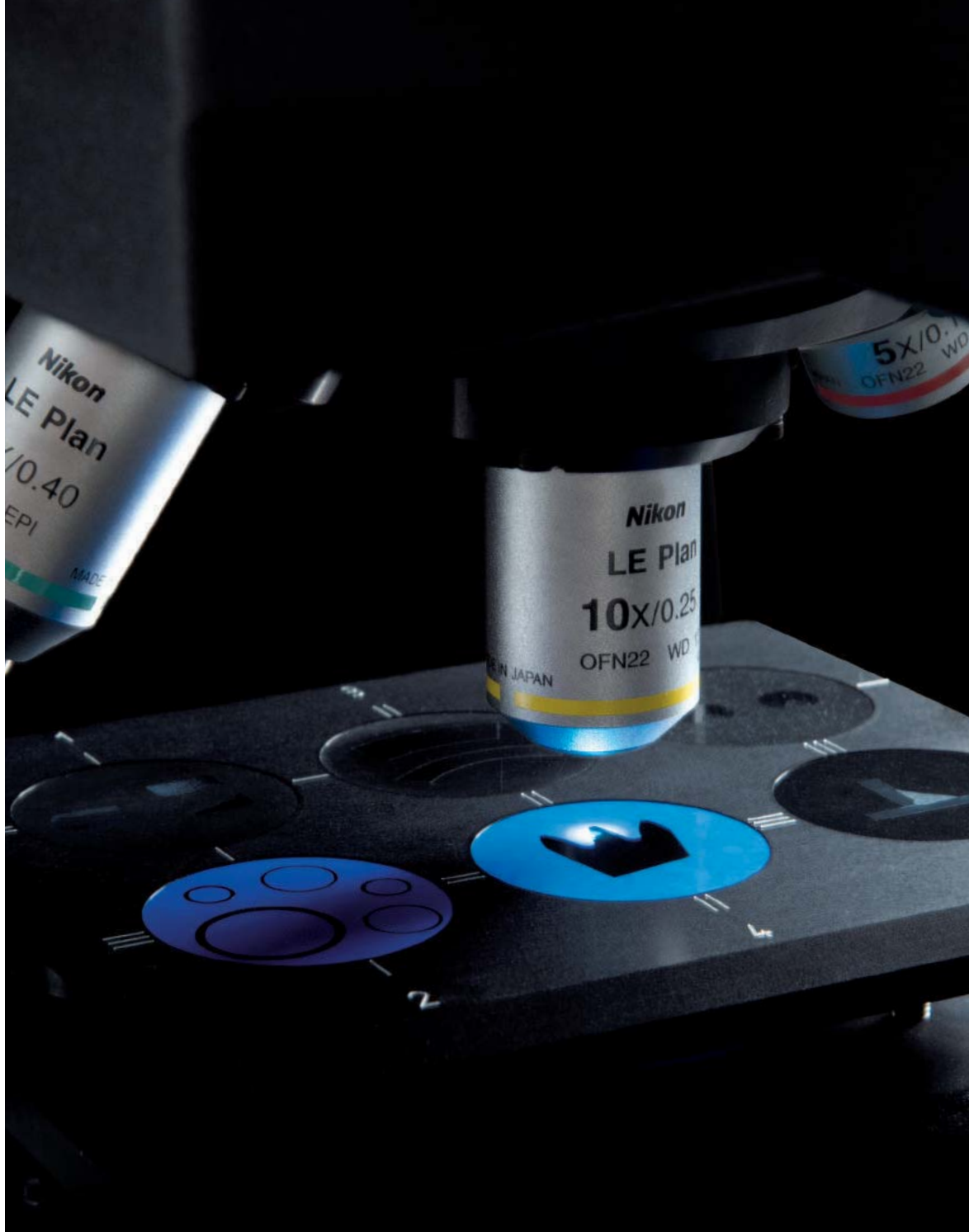
HZ50-4

Hardness tester by Presi

Exclusive feature:
two dimension detection
with sample holder.

Motorized marble stage.

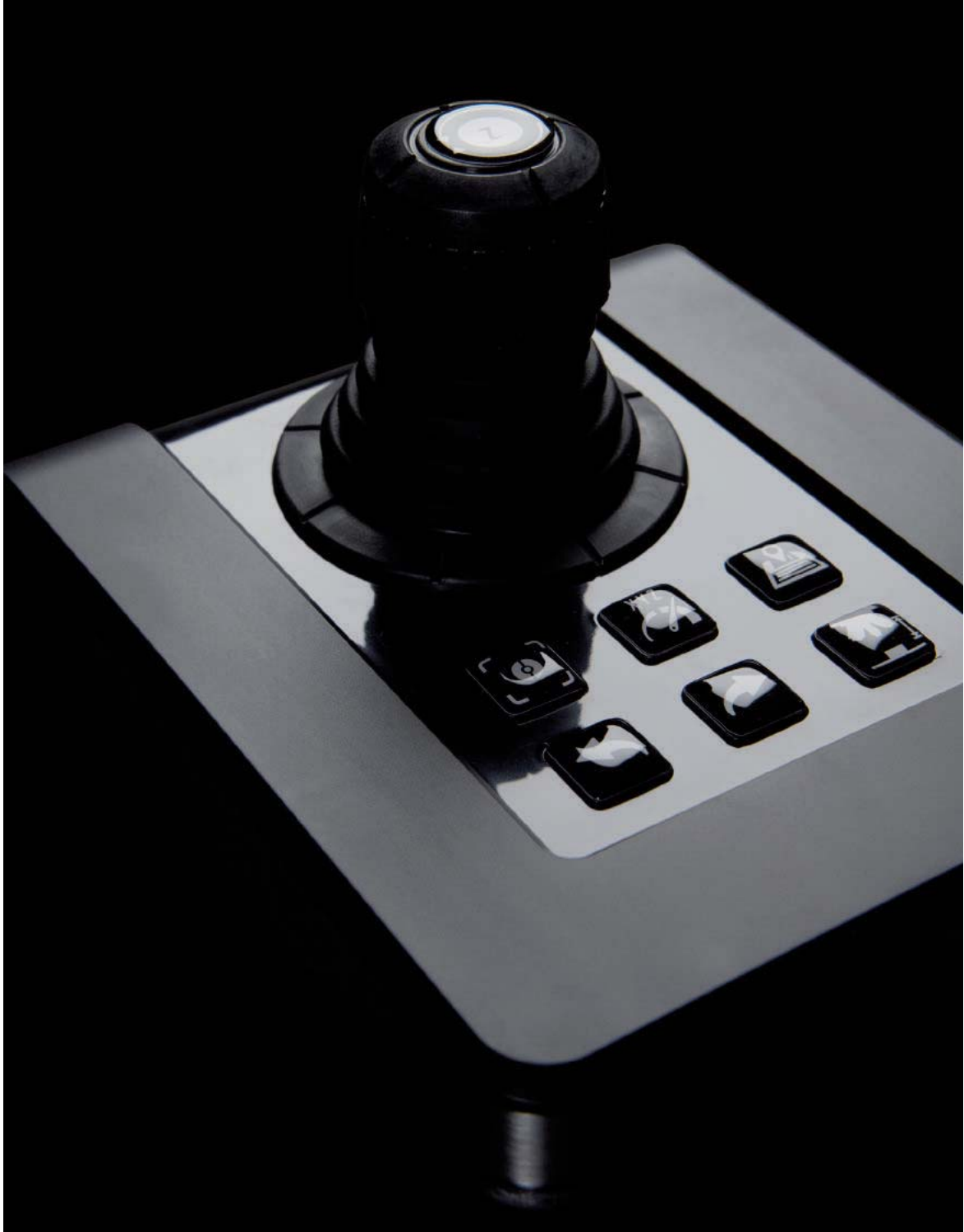




Silent operation.

NIKON objectives,
for a magnification
up to 2000x.

HZ50-4
Hardness tester by Presi



Ergonomic joystick
with customizable sensitivity.

Exclusively
USB connected.

HZ50-4
Hardness tester by Presi

HZ50-4

Hardness tester by Presi



PRESI TOUCH

Intuitive software with a graphic menu.

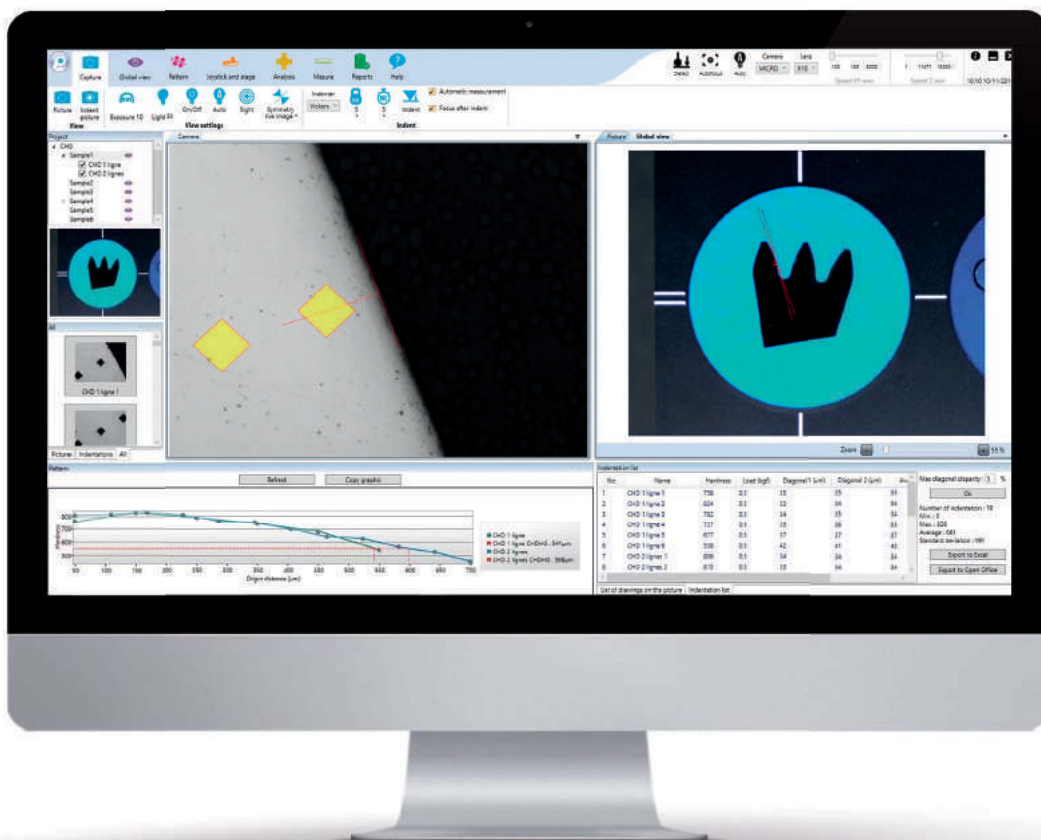
100% customizable interface.

Permanent overall view of the results and data.

Built-in search engine.

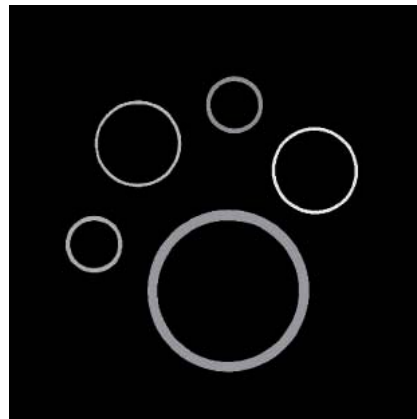
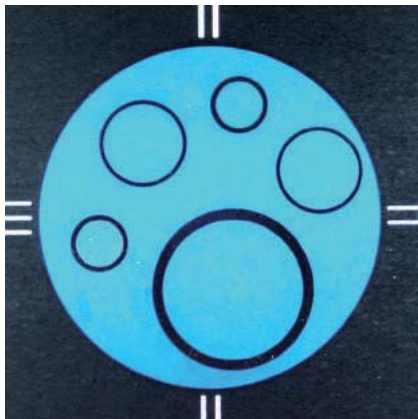
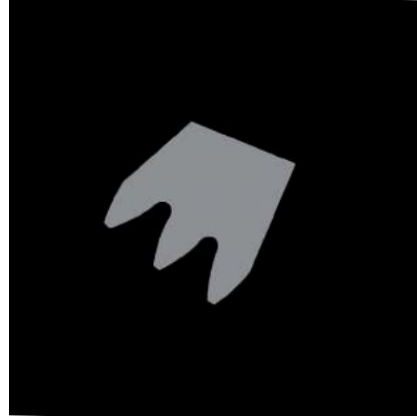
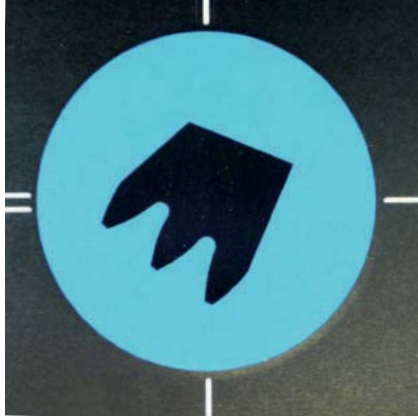
Automatic or manual indent measurement.

Single indent, regular or irregular pattern mapping.

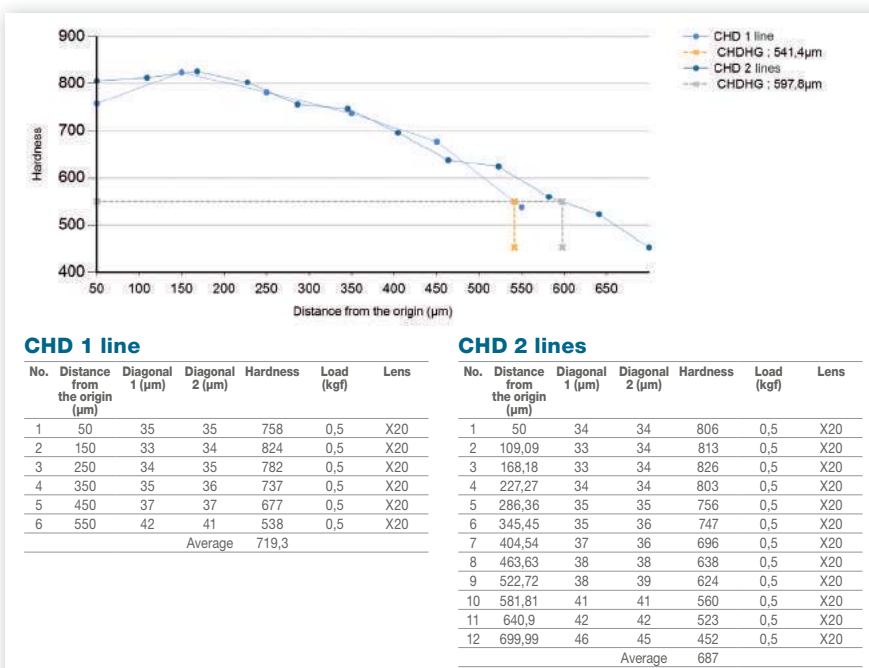


PRESI TOUCH

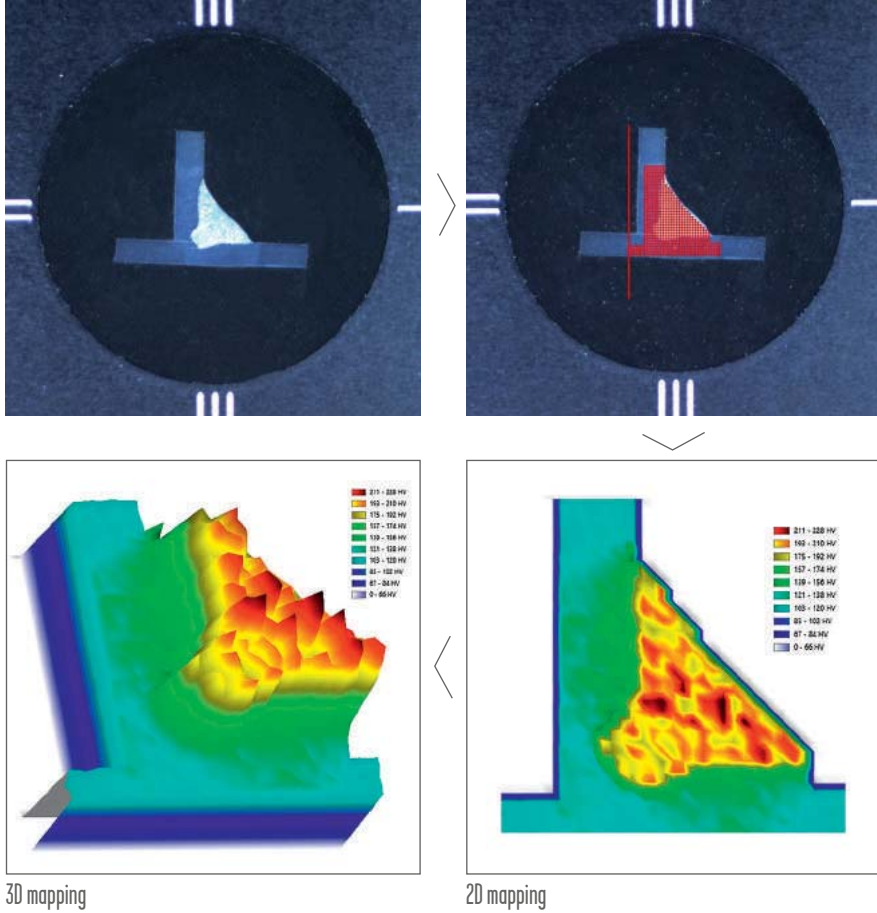
Automatic sample detection.



Automatic report generator.



Automatic Mapping feature.



3D mapping

2D mapping

Visual pattern construction, settings assistant and live view.

The 'Pattern informations' dialog box contains the following settings:

- Regular pattern**
 - Name of the pattern: CHD 2 lignes
 - Number of series: 2
 - Number of point: 6
 - Distance from the edge (μm): 50
 - Width (μm): 700
 - Space X (μm): 100
 - Space Y (μm): 150
 - Staggered pitch:
 - Indenter: Vickers
 - Load (kgf): 0.5
 - Measure lens: X20
 - Focus after indent:
 - Simulate hardness (Hv): 700
 - CHD HG: 550
- Visual representation:** A diagram showing a grid of 12 points arranged in two rows of six. The points are numbered 1 through 12.
- Summary:** Show numbers Total number of points : 12

At the bottom, there are buttons for 'Ok', 'Cancel', 'Save template', and 'Use template'. A radio button at the bottom left is set to 'Coordinates / Irregular pattern'.

PRESI TOUCH

Software

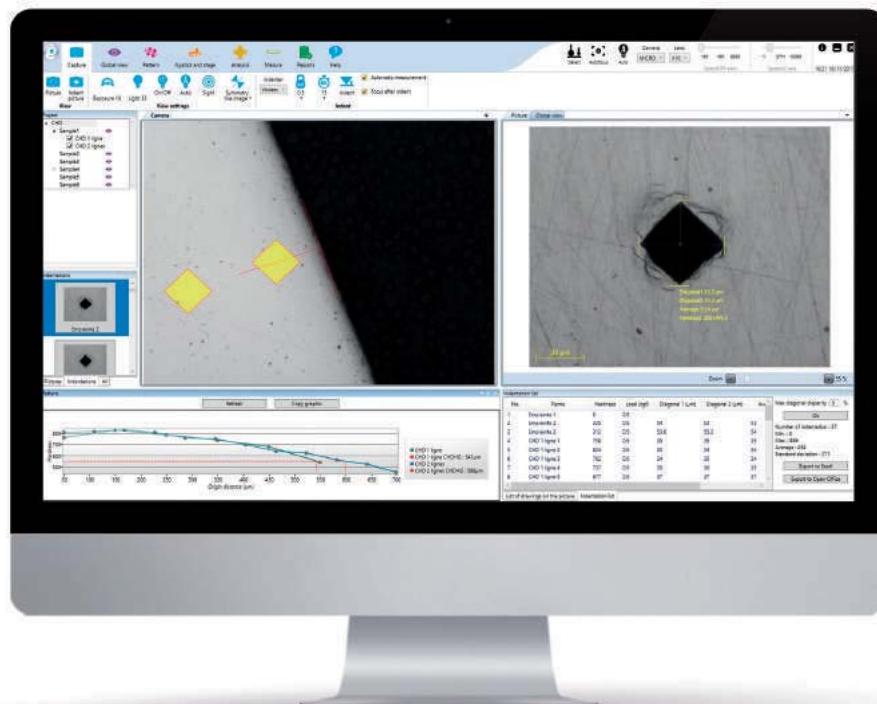
Version	Full automatic
Operating system	Windows 7, 8 & 10 64 bit

Controls

Automatic XYZ movement
XYZ joystick movement
Manual joystick sensitivity control
Automatic Z focus
Automatic and manual light intensity

Features

Various measuring tools
Automatic and manual measurements
Automatic and manual mapping
Single indentation
Pattern/structure indentations (create, save and reopen)
Irregular pattern
Macroscopic view picture
Microscopic/Macroscopic mosaic picture
Automatic load selection
Automatic multi sample detection
Heat treatment feature (CHD)
Integrated search engine
Automatic report generator
Report extraction (PDF, MS Excel, Open Office)



HZ50-4

Hardness tester by Presi

Load application

Test load range	From 10gf to 50kgf
Scales	Vickers, Knoop
Test load accuracy	<1%
Dwell time	1 - 999 seconds

Turret

Load cells	2
Touch sensor	1
Objectives	4
Magnification	200x to 2000x
Cameras	1 macroscopic view, color 1 microscopic view, black and white
Light source	LED
Z axis travel	250mm with stage
Z axis feeding accuracy	0,05µm

Stage

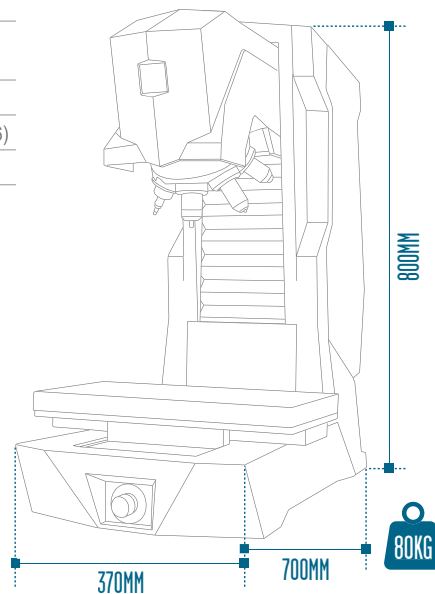
Material	Marble
Dimensions	420 x 210mm
X axis travel	200mm
Y axis travel	180mm
Stage feeding accuracy	1µm
Max. work piece weight	80kg

General

Power	220W
Ports	3 USB
Standard compliance	ISO 6507 & 4545; ASTM E384 & E92

Accessories

Sample holder for non mounted sample
Sample holder single place
Sample holder multi place (4 or 6)
Test blocs



BE PRECISE.

